

Sponsors Tiny Home Village: Jeffrey Commons

Aligned Architecture | Multi-Family Residential Architecture

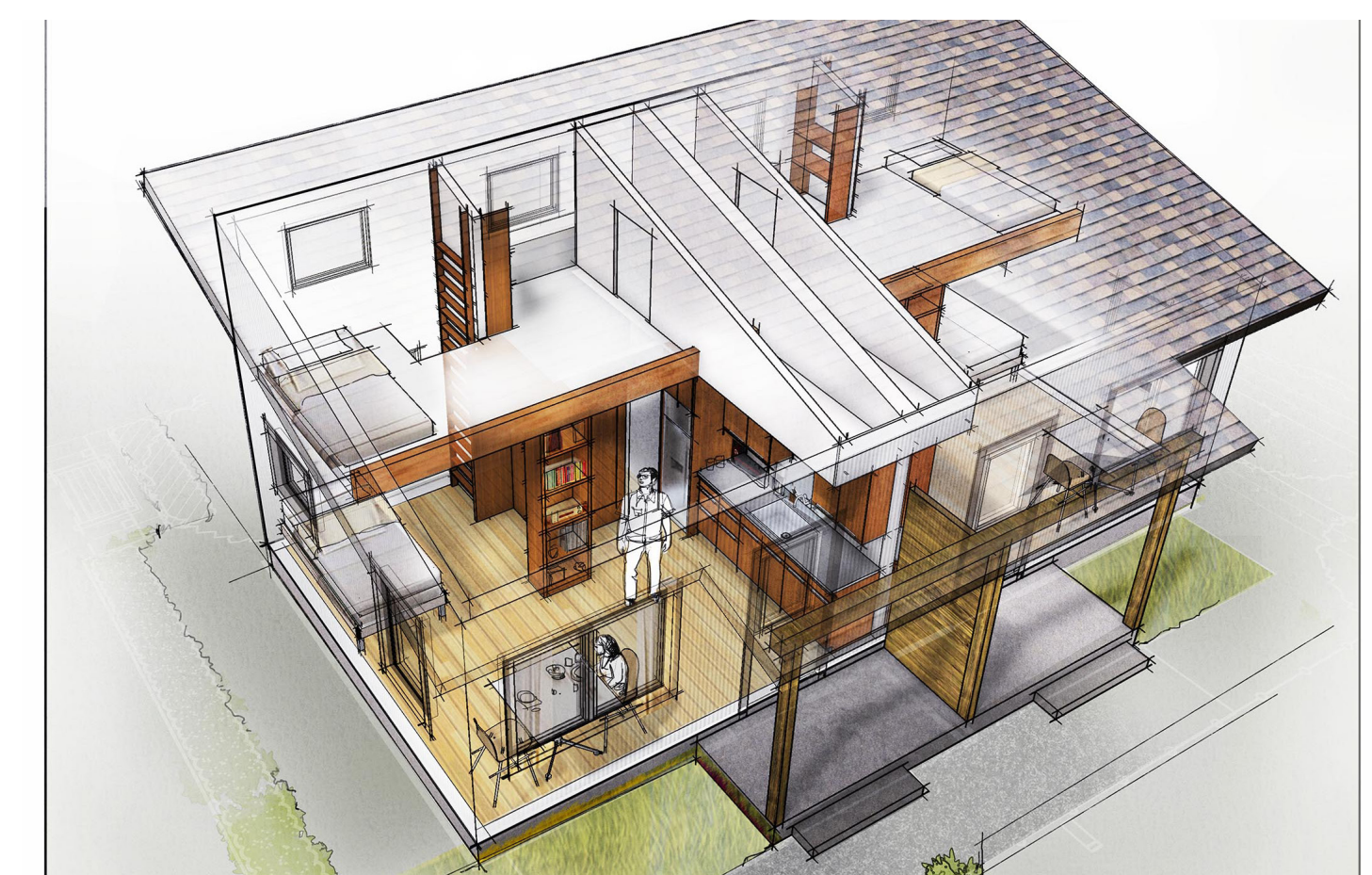


Jeffrey Commons is a village of 10 mini-homes for incarcerated individuals returning to our local community; thus the main goal of this project is integration – on multiple levels and across a range of scales. The mini-homes are organized into five duplexes facing an internal courtyard, knitted together with walkways and open green spaces. Decorative arbors form gateways facing the streets, welcoming users and visitors and linking the community to the surrounding urban fabric.

Affordability and Sustainability formed the foundations for this project. The building's design is based on material and construction efficiency, incorporating simple forms, modular dimensions, standard detailing, off-the-shelf components, and durable finishes. The roofs are constructed of pre-fabricated Structural Insulated Panels (SIPs), and their rapid installation help reduce labor, time, and cost.

Design for Integration • Design for Discovery • Design for Equitable • Communities • Design for Well-Being

Owner:	Sponsors, Inc.
Contractor:	Essex General Construction
Architect:	Aligned Architecture
Design Team:	Nir Pearlson, AIA • Jarrod Powell, AIA • Roger Ota, Assoc. AIA • Shreedhara Bajracha, Assoc. AIA
Consultants:	Pioneer Engineering • KPFF Consulting Engineers • Dougherty Landscape Architects
Photographer:	Steve Smith Photography



2020 People's Choice Awards

