

a modern gem set in nature's jewelry



PROJECT

McKenzie River Residence

Owner

Watson Family

Architect

Nir Pearlson Architect, Inc.

Landscape Architect

LandCurrent Landscape Architecture

Structural Engineer

K & A Engineering

General Contractor

Greg Morrow & Sons, Inc.

CHALLENGE

Design a compact modern home on a wooded slope fronting the McKenzie River. Integrate the structure into its natural setting. Reduce impact & energy consumption. Maximize daylighting and indoor-outdoor connections.

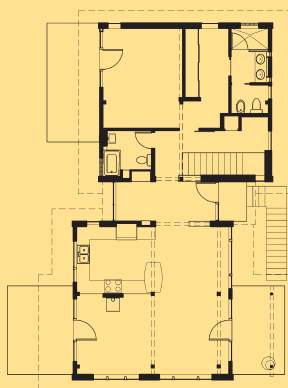
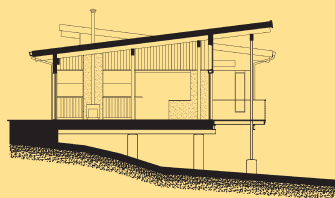
CONCEPTS

- Living and master wings occupy two separate square, tall volumes joined by a low-profile entry hall
- Living wing floor slab is set on concrete piles, floating above the sloping ground
- Second floor slab is set on concrete piles, suspended over the sloping ground
- Minimalist modern design couples industrial elements with traditional post & beam construction
- Simple yet expressive material palette includes concrete, stucco, wood & steel
- Shed roofs lifting in opposite directions afford tall panoramic views to nature's drama of basalt, forest & river



SUSTAINABLE STRATEGIES

- **Small footprint**
Compact design & raised floor allows regeneration of the forest floor
- **Radiant mass heat**
Hydronic tubes circulate super-efficiently heated water in concrete floor slab
- **Daylighting**
Oversized windows & transoms
- **Reclaimed materials**
Rigid insulation boards & finish woodwork
- **Increased insulation**
R-40 insulated roof & super-deep wall cavities



**NIR PEARLSON
ARCHITECT, INC.**

1460 East 21st Ave. Eugene OR 97403
541.345.5547 www.green-building.com

designs to sustain